

# WHITE PEARL RESORTS, PONTA MAMOLI FACT SHEET

## OVERVIEW OF RESORT & LOCATION

White Pearl Resorts, Ponta Mamoli is situated 25km north of the Kosi Bay Border. It is a private beach resort situated on the southern coast of Mozambique. Guests will experience a place so beautiful, a welcome so warm and an experience so pure, quite unlike any other in all of Mozambique. White Pearl Resorts, Ponta Mamoli is surrounded by natural beauty, from the Indian Ocean to the east, to the Maputo Elephant Reserve to the west. It promises to bring a cool, coastal guest experience to southern Mozambique and earn the reputation for being the jewel of the Indian Ocean. The closest airport is Maputo International, which is 100km from the Resort.



# WHITE PEARL RESORTS, PONTA MAMOLI FACT SHEET

## ACCESS TO RESORT

### By Air

There are currently 4 airlines which fly from Johannesburg to Maputo:

- > South African Airways (5 flights per day)
- > Air Mozambique (Min 2 flights per day, sometimes 3 flights per day)

There are also direct flights between Maputo and:

- > Cape Town
- > Durban

The following international carriers fly directly into Maputo:

- > Angola Airlines
- > TAP - Air Portugal
- > Ethiopian Airlines
- > Kenya Airways
- > SAA - South African Airways

\*\*Please note that flight schedules are subject to change without notification. We recommend that you contact the respective airline directly to receive an update schedule before confirming your trip.

## Transfers

Guests have the option of taking a Helicopter transfer or a 4X4 road transfer to the Resort.

### HELICOPTER TRANSFER FROM MAPUTO

- > Helicopter transfers need to be pre-booked.
- > Flight from Maputo International to the Resort takes approximately 30 minutes.
- > Guests will enjoy a scenic flight over the Maputo Elephant Reserve.
- > Cost - please refer to the White Pearl Resorts Transfer Schedule.
- > Booking procedure - details can be included as part of your accommodation booking.
- > Luggage restrictions apply - each guest may have 1 x Soft Bag, weighing between 12kg and 15kg. There will be a charge for any additional luggage.
- > Excess luggage can be transported to the Resort by road at an additional cost of R2000.00 per vehicle (one way). Alternatively, we have storage facilities available in Maputo.
- > Helicopter Transfer times are season/weather dependent. Guests landing after 16h00 in Summer and after 15h00 in Winter will have to overnight in Maputo.

### TRANSFERS FROM THE KOSI BAY BORDER

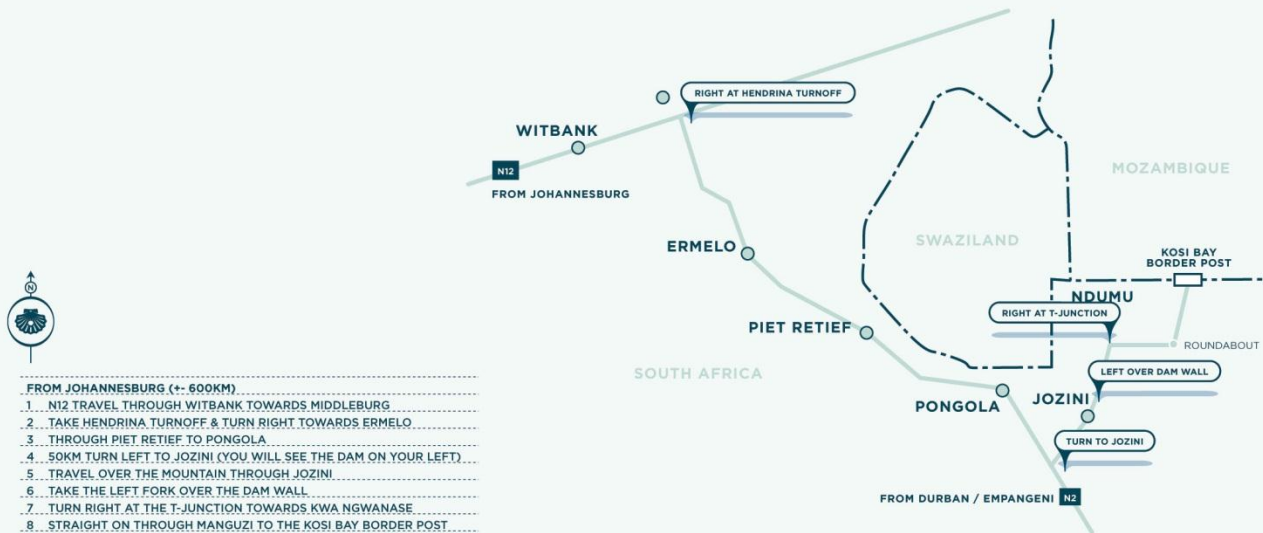
- > Duration - approximately 1 to 1.5 hours, dependent on weather and road conditions.
- > Cost - please refer to the White Pearl Resorts Transfer Schedule.
- > Booking procedure - details can be included as part of your accommodation reservation or alternatively can be booked directly with Reception on arrival at the Resort.



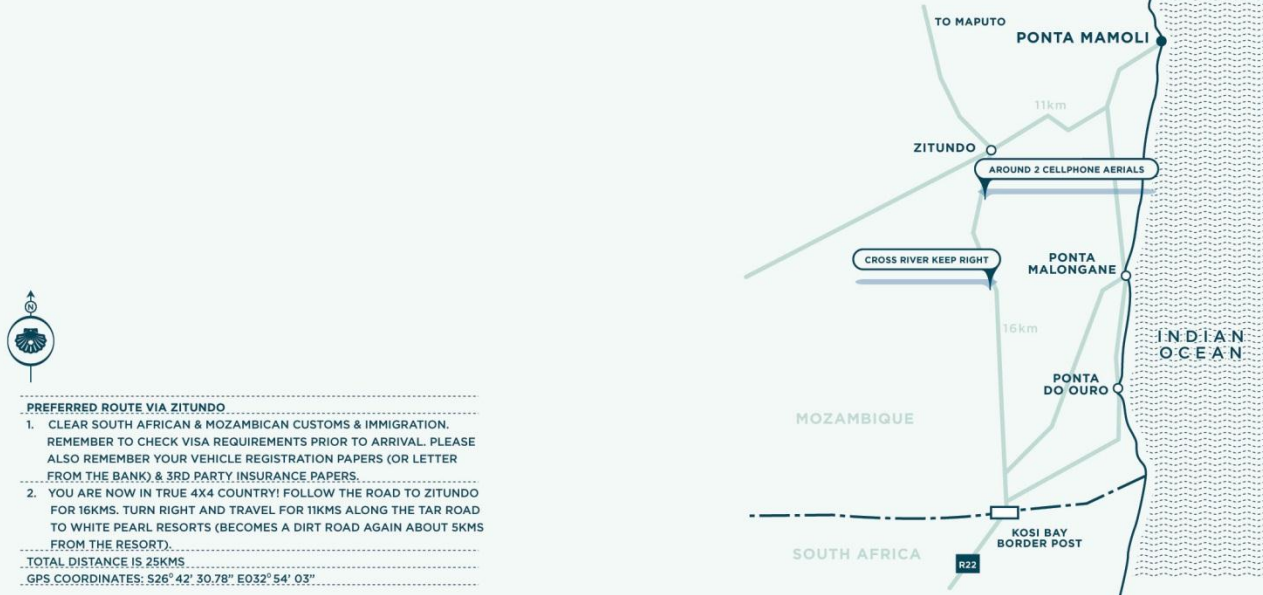
PONTA MAMOLI  
MOZAMBIQUE

# Self-Drives

## DIRECTIONS FROM JOHANNESBURG TO KOSI BAY BORDER



## DIRECTIONS FROM KOSI BAY BORDER POST TO WHITE PEARL RESORTS, PONTA MAMOLI



# WHITE PEARL RESORTS, PONTA MAMOLI FACT SHEET

## ACCOMMODATION

### SUITES AVAILABLE

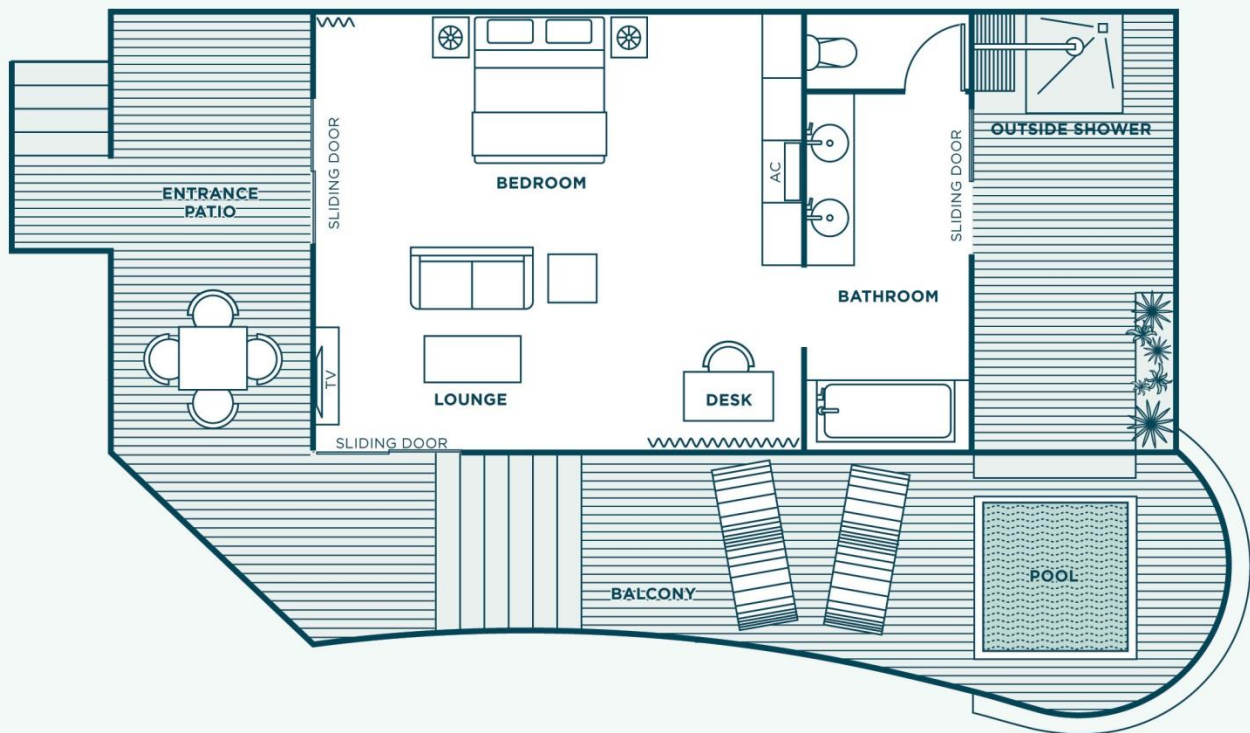
- > 22 ocean-facing Pool Suites, each with private plunge pool

### POOL SUITE AMENITIES

- > Private plunge pool
- > Outdoor shower
- > Bath
- > Double vanity
- > Separate WC
- > Television with DSTV
- > Personal bar
- > In-room tea and coffee tray
- > In-door and out-door comfortable seating
- > Out-door dining seating
- > Hair dryers
- > IPOD docking station
- > Air-conditioning
- > Wi-Fi

### POOL SUITE LAYOUT

35 sqm (ACTUAL SUITE SIZE)  
54 sqm (INCL. EXTERIOR DECKING)



PONTA MAMOLI  
MOZAMBIQUE

# WHITE PEARL RESORTS, PONTA MAMOLI FACT SHEET

## GUEST AREAS

### DINING AREAS

#### THE RESTAURANT

- > Informal, but no bathing suits or shorts for dinner.
- > Serves breakfast for in-house guests.
- > Laid back lunch time dining.
- > Elegant dinners.
- > Beach Elegance.
- > Serving the best Mozambican seafood.

#### THE BEACH BAR

- > On the beach.
- > Open from 11am.
- > Tapas style menus available with refreshing cocktails.

### THE BEACH SHOP

The Resort has a Beach Shop selling simple, yet sophisticated beach accessories and Mozambican memorabilia. Guests are able to purchase accessories, artefacts, Makonde carvings, baskets, ceramic candle holders, artwork, bags, books, beach bags and clothing amongst many other things.

### THE DIVE CENTRE

#### SCUBA DIVING

White Pearl Resorts, Ponta Mamoli offers an exclusive scuba diving experience on protected, world-renowned reefs. Our experienced dive instructors will show you brightly coloured underwater corals and an array of brilliantly marked fish launching directly from the beach at the resort. With its clear waters and accessible reefs, this is the ideal dive destination for both beginners and specialised divers. PADI Resort courses are also available and diving equipment can be hired from the Dive Centre.

#### DIVE COURSES

##### PADI DISCOVER SCUBA COURSE (1 day)

Please note that this is not a full qualification, but is a wonderful introduction to the underwater world. Theory, pool session, 1 dive and all equipment hire.

##### PADI OPEN WATER COURSE (3-5 days)

Qualification as an open water diver (dive independently with a buddy to a maximum of 18 meters). Theory, pool sessions, 4 qualifying dives, equipment hire, use of all course books and certification.

##### PADI ADVANCED OPEN WATER COURSE (3-5 days)

Qualification as an advanced diver (dive independently with a buddy to a maximum of 30 meters). Pre-qualification as an open-water diver is required. Knowledge development, 5 qualifying dives, equipment hire, use of all course books and certification.

##### PADI RESCUE DIVER COURSE (3-5 days)

Qualification as a rescue diver. Pre-qualification as an open-water diver is required. Knowledge development, 5 qualifying dives, equipment hire, use of all course books and certification.

#### 'TIDAL'/DIVING SEASONS

For up to date tide tables, please visit [www.kingfisher.co.za](http://www.kingfisher.co.za)

### OTHER WHITE PEARL RESORT ACTIVITIES

We offer a wide range of non-diving activities:

#### HORSE RIDING

Explore the natural bush surrounding White Pearl Resorts, Ponta Mamoli on horseback. Gallop along a bush trail, weaving through indigenous flora and fauna and enjoy spectacular views of the ocean from high-up vantage points. All rides are professionally managed to ensure an enjoyable experience for all ages and levels of experience.

#### SNORKELLING AND SWIMMING WITH DOLPHINS

So rich in sea life are the waters off White Pearl Resorts, Ponta Mamoli that it feels as if you have been transported into a giant natural aquarium. Discover spectacular underwater displays of colourful corals and lively fish as you float in the azure waters of the Indian Ocean. Enjoy a snorkelling trip to a nearby reef; while you explore, our crew will be on the lookout for pods of silvery, glistening Bottlenose Dolphins which regularly glide through these waters. We have a special licence to take a maximum of eight guests on this amazing outing where you'll have the chance to encounter these majestic and friendly marine creatures up close. Interaction with the dolphins is strictly monitored and controlled in line with conservation guidelines.



PONTA MAMOLI  
MOZAMBIQUE

# WHITE PEARL RESORTS, PONTA MAMOLI FACT SHEET

## SEE THE TURTLES (seasonal from November to February)

White Pearl Resorts, Ponta Mamoli is home to one of the richest turtle nesting sites in southern Mozambique. Between November and February each year, Loggerhead and Leatherback turtles head to this stretch of coast to lay their eggs. In partnership with the Southern Mozambique Marine Turtle Nesting Monitoring, Tagging and Conservation Programme, the resort works to monitor and protect these majestic and docile creatures. Viewing of the nesting site can be arranged with the resort manager.

## WALKING ON IDYLIC BEACHES

Whether it's a gentle stroll or a more energetic walk, discover kilometres of pristine beaches at White Pearl Resorts, Ponta Mamoli. Private picnic lunches can also be arranged on the beach.

## FISHING CHARTERS

There's nothing like the thrill of deep sea fishing off the Mozambican coast. For the experience of a lifetime, book a full or half-day charter in a boat stocked with refreshments as we set out to some of the world's richest deep sea fishing grounds. The boat is equipped with both light and heavy tackle for game fishing as well as a GPS and Fish Finder. Depending on the season, guests frequently encounter Sailfish, King Mackerel, Dorado, King Fish and a variety of Tuna. We practice a catch-and-release policy on all our fishing adventures. Let our knowledgeable skippers guide you in your pursuit of your catch and allow our experienced deckhands to assist you with tasks such as baiting. You'll also have the opportunity of spotting other marine animals, such as sharks, whales and dolphins in their natural habitat.

## MASSAGE TREATMENTS

Surrounded by soothing sounds and calming scents, experience a variety of in-room massage treatments. Feel all tension evaporate with a massage designed to ease your muscles and relax body and mind.

The following in-room treatments are on offer to guests:

- > Indian head massage
- > Back, neck and shoulder massage
- > Full body massage
- > Foot massage

Please refer to the Activity Schedule for prices.

## WEATHER

Mozambique enjoys a tropical climate, with plenty of sunshine throughout the year. The average temperature is around 28°C and the weather along the coast is sunny and warm, even in mid-Winter. The country has two seasons; a wet season (from October to March) and a dry season (from April to September) – with very little variation in temperatures between the two.

## MALARIA

Due to its more southern location, White Pearl Resorts, Ponta Mamoli is situated in a low risk malaria area. Nevertheless, please consult with your medical practitioner for any advice on any other precautions. Please make generous use of an insect repellent (which can be found in your room) after 17h00 in the evening. Mosquitoes can be prevalent and it is best to try and minimise the discomfort of their bites!

## FOR YOUR INFORMATION

### ARRIVAL AND DEPARTURE TIMES

Check in time: 14h00  
Check out time: 10h00

### PAYMENTS AND FOREIGN CURRENCY

Accounts may be settled in cash in South African Rands, Mozambican Meticals or by VISA card and MasterCard. We are regretfully not able to accept American Express or Diners Club cards.

### ADAPTORS

All electrical outlets are 220v AC. A limited amount of international adaptors are available from reception.

### CHILD POLICY

- > Children of all ages are welcome.
- > One child under the age of 12 can be accommodated with its parents in the same room – a separate bed will be provided.
- > Under the age of 2, the child stays for free – a camp cot will be provided on request.
- > Between the ages of 3 and 12, the child will pay 50% of the per person rate.
- > The resort can accept a maximum of 3 triple rooms per night.
- > If a second room is booked, 1 child pays full adult rate and 1 child pays 50% of the per person rate



PONTA MAMOLI  
MOZAMBIQUE

# WHITE PEARL RESORTS, PONTA MAMOLI FACT SHEET

## BOOK NOW:

Reservations:  
reservations@whitepearlresorts.com

## CONTACT DETAILS

### HEAD OFFICE

P.O. Box 78754  
Sandton 2146  
SOUTH AFRICA  
Tel: +27 11 026 2674  
Fax: +27 11 268 2290  
Website: [www.whitepearlresorts.com](http://www.whitepearlresorts.com)

Sales & Marketing Manager  
Natalie Mietz  
E-mail: [natalie@whitepearlresorts.com](mailto:natalie@whitepearlresorts.com)

## RESORT

White Pearl Resort, Ponta Mamoli  
Zitundo  
MOZAMBIQUE  
Tel: +258 84 605 8112  
Fax: 086 548 3520  
Website: [www.whitepearlresorts.com](http://www.whitepearlresorts.com)

General Manager  
Liza Huismans  
E-mail: [gm@whitepearlresorts.com](mailto:gm@whitepearlresorts.com)  
Emergency Mobile: +258 84 45 6675

## BANK DETAILS

### SOUTH AFRICA

Bank: Standard Bank  
Account Name: Ponta Mamoli Resorts  
Account No.: 221507736  
Branch: Rivonia  
Branch Code: 001255  
Swift Code: SBZA ZAJJ 001255 / 221507736

### MOZAMBIQUE

Bank: BCI  
Account Name: Empresa De Fomento Turistico  
Account No.: 258 92 40 51 0002  
Branch: Ponta de Ouro  
NIB: 000 80000 258 9240 510277  
Swift Code: CGDIMZMA



PONTA MAMOLI  
MOZAMBIQUE